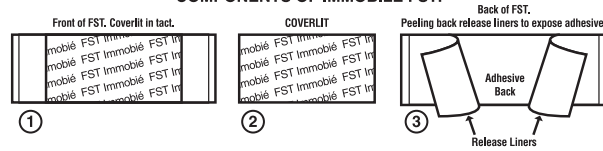
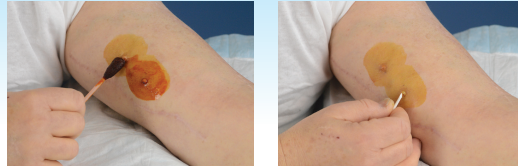


IMMOBILE FST INSTRUCTIONS FOR USE FOR BUTTON HOLE ACCESS

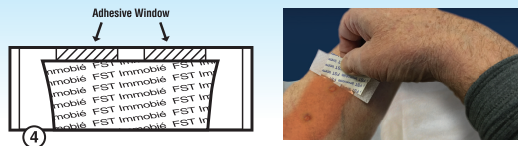
COMPONENTS OF IMMOBILE FST:



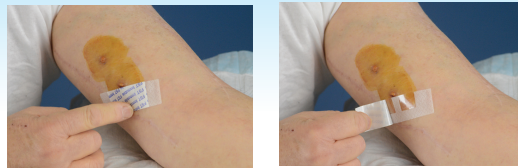
The Immobile FST is designed as a tool to assist patients with one handed self-cannulation for Buttonhole (dull needle) as well as for sharp needle cannulations of grafts and fistulas. The following examples portray cannulating buttonhole access.



Once you have followed all your training procedures in preparation for cannulation, pick up the FST in the center of the device as shown and determine the orientation of the FST by removing the coverlet to expose the "wing windows". Replace the coverlet but leave a portion of the wing windows exposed (especially if you are using gloves).



Leaving the FST Coverlet on top, remove the release liners (see drawing 3 above) from the opposite side and grasp the device in center as shown (where there is no adhesive). Keeping the device flat, place on the skin about a ¼ inch below the access point oriented at a 90 degree angle to the track of the access and then apply it to the skin as shown.



1. Cannulate your arterial access first (the one closest to your wrist) making sure your needle is at the proper angle as your nurse/trainer has instructed. When you see the blood flash back place wings firmly on the adhesive windows. Note that you can use the FST to place the angle of the wings to maximize flow.



2. Prepare precut tape according to your training. Our suggestion is to prepare 6 pieces of tape: (2) three inch pieces, (2) five inch pieces and (2) six inches pieces in length. (It is easier to make the 6" pieces out of narrower tape if possible) Use one of the 3" pieces and place across the wing of the needle to prevent it from tipping as shown.

3. Select one of the 6" pieces and place the center of the tape strip under the needle tubing with the adhesive facing UP (as close to the back of the Needle Wing as possible, as shown). Create a "chevron" by taking one end of tape and bring it up across the wing and away from button hole as shown and repeat with other end of the tape.



Finally, take one of the 5" pieces of tape and place a 1"x1" Gauze pad in the middle. Tape across the underlying tape and the "chevron". Repeat the same cannulation instructions and repeat the tape down steps on the upper Button Hole

Follow your instructions for performing dialysis after both needles are cannulated.